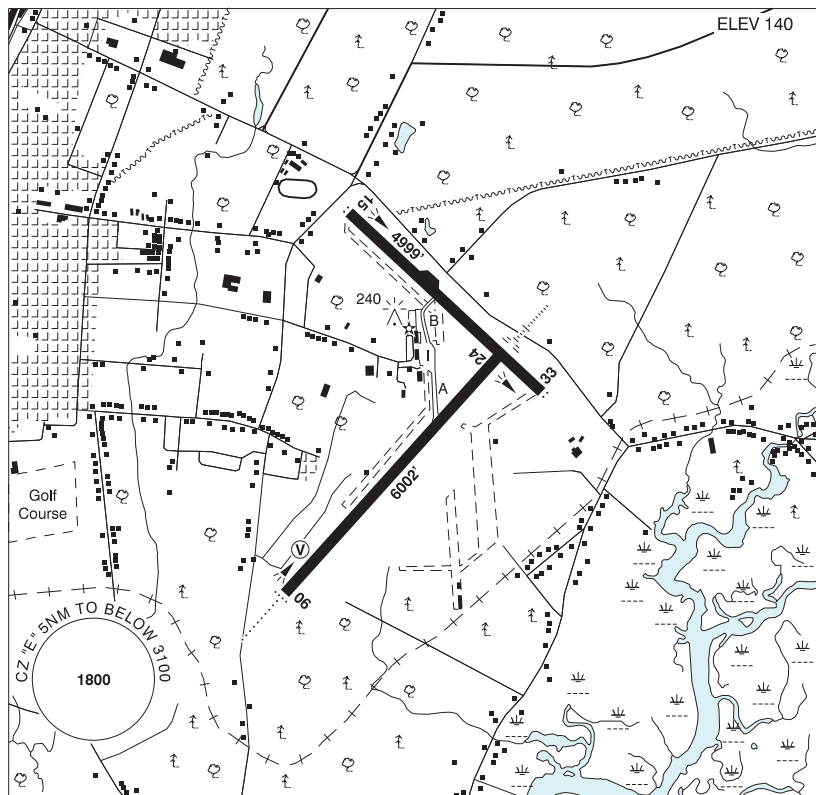


YARMOUTH NS

CYQI



| | |
|-----------------|--|
| REF | N43 49 38 W66 05 18 Adj E 17°W (2013) UTC-4(3) Elev 140' A5003 LO8 HI6 CAP |
| OPR | Yarmouth Airport Commission 902-742-6466 11-20Z† O/T PN 30 mins exc SAR & MEDEVAC Reg |
| PF | A-1 C-2,3,4,5,6 |
| CUST | AOE/110 (225 with staged off-loading) 888-226-7277 12-21Z† May 1-Oct 31; 12-21Z† Mon-Fri including hols Nov 1-Apr 30 |
| FLT PLN | <p>FIG London 866-WXBRIEF (Toll free within Canada) or 866-541-4104 (Toll free within Canada & USA)</p> <p>ACC (IFR only) Moncton 506-867-7177 or 866-480-8200.</p> <p>WX METAR H24 ALTIMETER/WIND 902-742-6466 H24 (see COMM) TAF H24 issue times: 00, 06, 12, 18Z</p> |
| SERVICES | Call out chg may be levied for one or more svcs. |
| FUEL | 100LL, JA-1 (FSII avbl), HPR ltd hrs, ctc apt opr |
| OIL | 65, 100 |
| S | 1,2 |
| SUR FL | D-ice |
| MIL CON | World Fuel Services 902-746-4532 |

NOVA SCOTIA

AERODROME / FACILITY DIRECTORY

YARMOUTH NS (Cont'd)

CYQI

| | |
|-----------------|--|
| RWY DATA | Rwy 06(059°)/24(239°) 6002x150 ASPH Rwy 06 down 0.42% AGN IIIA Rwy 15(150°)/33(330°) 4999x150 ASPH Rwy 15 down 0.35% AGN IIIA |
| TWY | B: Acft over 50,000 lbs not auth. |
| RCR | Opr CRFI & win maint avbl ltd hrs, PLR/PCN |
| LIGHTING | 06-AD(non-std 2000') (TE HI) V2, 24-AE(TE HI), 15-AS(TE ME), 33-AS(TE ME) |
| COMM | |
| RCO | London Rdo 123.55 (FISE) |
| MF | UNICOM (AU) 123.0 5NM 3100 ASL (CAR 602.98) |
| PAL | Moncton Ctr 123.9 368.5 |
| NAV | |
| DME | YQI 113.3 Ch 80 N43 49 30 W66 04 57 (159') |
| CAUTION | Daily radiosonde balloon launches with an ascent rate of 1000 ft/min btwn hrs of 1115-1345Z and 2315-0145Z. Deer in vic of aprt. |