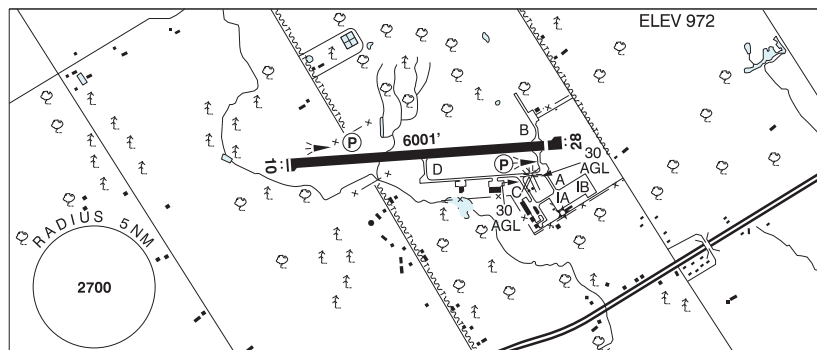


ONTARIO

AERODROME / FACILITY DIRECTORY

BARRIE-ORILLIA / LAKE SIMCOE ON

CYLS



REF	N44 29 10 W79 33 20 2.1NW 11°W UTC-5(4) Elev 972' A5000 LO6 HI5 CAP RCAP
OPR	County of Simcoe 705-487-0999 Reg Ldg fees for acft abv 3000 kg max tkof wt.
PF	B-1,2,3,6,7,8 D-4,5
CUST	AOE/24 (cost recovery) 888-226-7277 12-22Z‡, Mon-Fri excess of 15 pax 12-02Z‡
FLT PLN	
FIG	London 866-WXBRIEF (Toll free within Canada) or 866-541-4104 (Toll free within Canada & USA)
WX	AUTO 705-487-6231 (see COMM)
SERVICES	12-02Z‡ Apr-Oct, 12-24Z‡ Nov-Mar, O/T call out chg.
FUEL	100LL Avfuel FBO, JA-1 (FSII avbl) Chartright, SP
OIL	15W/50, W100
S	1,2 (ltd), 4,5,6
SUP FL	D & A-ice Avfuel FBO
JASU	CE16
PVT ADV	Avfuel FBO 122.7 705-487-0999, Chartright 129.475 905-672-3016
RWY DATA	Rwy 10(097°)/28(277°) 6001x148 ASPH Thld 28 displ 303' Thld 10 displ 43' Rwy 10 first half down 0.8% AGN IIIA
APRON	Apron IB rstd to 15,000 lbs or less.
RCR	Opr Win maint 12-02Z‡, O/T 3 hrs PN call out chg, PLR/PCN.
LIGHTING	10-AS(TE HI) P2, 28-AS(TE HI) P2 ARCAL-122.7 type K AS lgt avbl on ME and HI ints only.
COMM	
ATF	UNICOM ltd hrs O/T tfc 122.7 5NM 4000 ASL
AUTO	122.975
NAV	
DME	MIDLAND YEE 112.8 Ch 75 N44 34 54 W79 47 36 (996')
PRO	Rgt hand circuits Rwy 10 (CAR 602.96).
CAUTION	Twr 3NM NW of A/D 420 AGL, 1634 ASL. Possible win maint eqpt on rwy outside ops hrs. Ocsl wildlife on rwy.