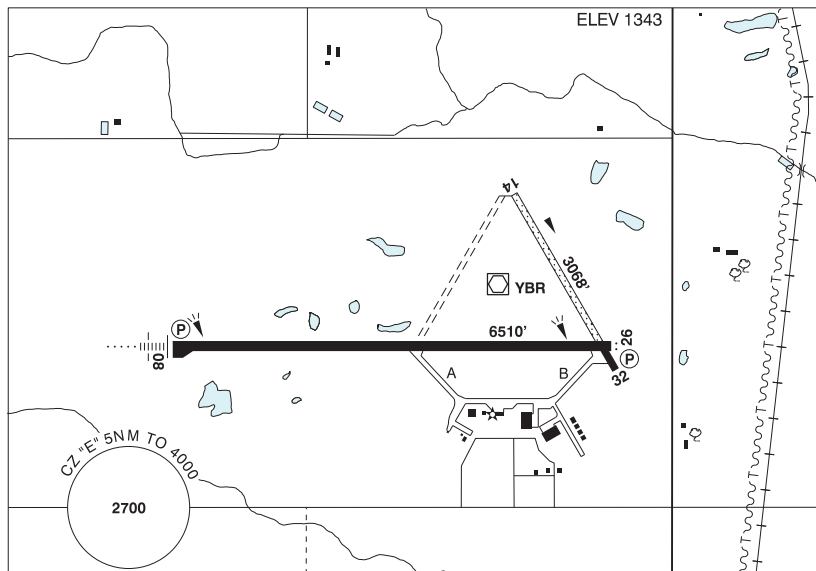


MANITOBA

AERODROME / FACILITY DIRECTORY

BRANDON MUNI MB

CYBR



REF	N49 54 36 W99 57 08 4N 6°E (2013) UTC-6(5) Elev 1343' A5007 LO4 HI4 CAP
OPR	Muni 204-729-2166 12-02Z† Mon-Fri, 14-24Z† Sat-Sun Cert Ldg fees
PF	A-1 C-2,3,4,5,6
CUST	AOE/15 888-226-7277 15-23Z†
FLT PLN	Pilots to open/close VFR fit plan with Edmonton rdo, FISE or by phone.
FIC	Edmonton 866-WXBRIEF (Toll free within Canada) or 866-541-4102 (Toll free within Canada & USA)
WX	METAR H24. TAF H24, issue times: 00, 06, 12, 18Z.
SERVICES	Call out chg may be levied for one or more svc
FUEL	100LL, JA-1 (FSII avbl), SP, HPR 14-23Z† O/T call out chg
OIL	All
S	1,2,3,4 (ltd),5,6
SUP FL	D-Ice (avbl by truck)
JASU	CE16
PVT ADV	Brandon Flight Centre 122.95 204-728-7691
RWY DATA	Rwy 08(085°)/26(265°) 6510x150 asphalt Rwy 14(144°)/32(324°) 3068x60 treated gravel/asphalt First 438' Rwy 32 asphalt
RWY CERT	Rwy 08/26 AGN IIIB Rwy 14/32 AGN II
APRON	No power turns permitted on tml apron.
RCR	Opr Ltd win maint Rwy 14/32. Rwy 14/32 rstd to acft under 12,000 lbs. A/D maint 12-02Z† Mon-Fri, 14-24Z† Sat-Sun O/T 1 hr PN for AMSCR and CRFI. Call out charge may be levied. 204-729-7026.
LIGHTING	08-AN(TE HI) P2, 26-AS(TE HI) P2

MANITOBA

AERODROME / FACILITY DIRECTORY

BRANDON MUNI MB (Cont'd)

CYBR

COMM	
RADIO	122.1 (E) (emerg only 204-728-7169)
RCO	Edmonton 123.275 (FISE) 126.7 (bcst)
MF	rdo 122.1 5NM 4000 ASL (CAR 602.98)
ARR	Winnipeg Ctr 132.25
DEP	Winnipeg Ctr 132.25
PAL	Winnipeg Ctr 132.25
NAV	
NDB	BRANDON BR 233 (L) N49 54 29 W100 04 24
VOR/DME	YBR 113.8 Ch 85 N49 54 36 W99 56 44 (1368')
DME	IBR 110.1 Ch 38 N49 54 31 W99 57 43 Pvt
ILS	IBR 110.1 (Rwy 8) Pvt
PRO	Rgt hand circuits Rwy 26 (CAR 602.96). Periodic extv glider ops to 4000 MSL. Gliders & tow acft opr fr infield S of Rwy 08/26. Glider & tow acft circuits S of Rwy 08/26. Rgt hand circuits Rwy 32 (CAR 602.96). Gliders & tow acft opr fr infield W of Rwy 14/32. Glider & tow acft circuits W of Rwy 14/32. Acft inbd fr the S may be requested to rpt crossing the Trans Canada Hwy. ATS PPR REQUIREMENTS: Ctc Winnipeg ACC 204-984-5979 for IFR tng and photo survey within Brandon Class E Airspace 12,500' and below.
CAUTION	Hydro P-lines 154 AGL unlgtd 9000' E of Thld 26. Ocsl parajump activity within 1.5NM of A/D to 14,000 ASL. Hi ints lgt oprg dusk to dawn fr hotel roof at N49 49 56 W99 57 40 (4.7NM S A/D). Beams projecting upward. Hi ints lgt may create temporary effects to vision.