

CANADA FLIGHT SUPPLEMENT / GPH 205

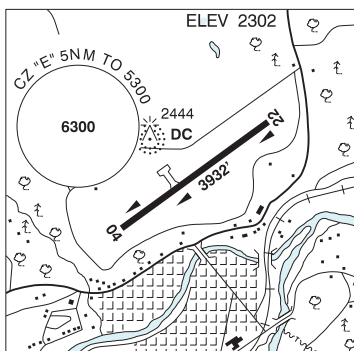
Effective 0901Z 3 January 2019 to 0901Z 28 February 2019

AERODROME/FACILITY DIRECTORY B837

PRINCETON BC

CYDC

REF	N49 28 04 W120 30 45 Adj N 16°E (2019) UTC-8(7) Elev 2302' A5004 LO2 HI3 CAP RCAP
OPR	Town 250-295-3135/293-6279 Reg
PF	A-1 C-2,3,4,5
FLT PLN	NOTAM FILE CYDC Kamloops 866-WXBRIEF (Toll free within Canada) or 866-541-4101 (Toll free within Canada & USA) METAR 15-01Z (DT 13-01Z) O/T LWIS Tml Advsy fcst incl in VFR rte fcst (dur DT only), issue times: 14, 17, 20, 23Z.
SERVICES	
FUEL	100LL, JA
S	5



RWY DATA	Rwy 04(038°)/22(218°) 3932x75 asphalt
RCR	Opr Ltd win maint. PLR/PCN

COMM	
RCO	Pacific rdo 125.85 (FISE) 126.7 (bcst)
ATF	tfc 123.2 5NM 5300 ASL
PAL	Vancouver Ctr 135.0 351.3

NAV	
NDB	DC 326 (M) N49 28 10 W120 31 00
VOR/DME	YDC 113.9 Ch 86 N49 22 54 W120 22 26 (5335')

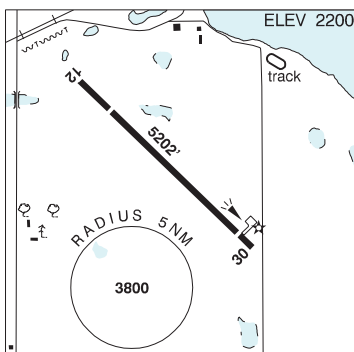
PRO	Rgt hand circuits Rwy 04.
------------	---------------------------

CAUTION	5' ditch 300' W Thld 04. Wildlife adj to rwy dur sum months.
----------------	--

PROVOST AB

CEH6

REF	N52 20 17 W110 16 43 1S 13°E (2015) UTC-7(6) Elev 2200' A5015 LO2 CAP
OPR	Municipal District of Provost 780-753-2434 Reg
PF	B-1 D-2,3,4,5,6
FLT PLN	NOTAM FILE CYLL Edmonton 866-WXBRIEF (Toll free within Canada) or 866-541-4102 (Toll free within Canada & USA) Edmonton IFR 888-358-7526
SERVICES	
FUEL	100LL (self-serve, debit and credit cards)
S	4,5,6



RWY DATA	Rwy 12(121°)/30(301°) 5202x75 asphalt Rwy 30 down 0.44% Thld 12 displ 874'. Thld 30 displ 384'.
RCR	Opr 1530-2330Z± O/T 780-753-2168/2434 Ltd maint

LIGHTING	12-(TE ME), 30-(TE ME) ARCAL-122.8 type K
-----------------	---